













Ref: CBS3-LM-SPPS1250

Price: 470,000€

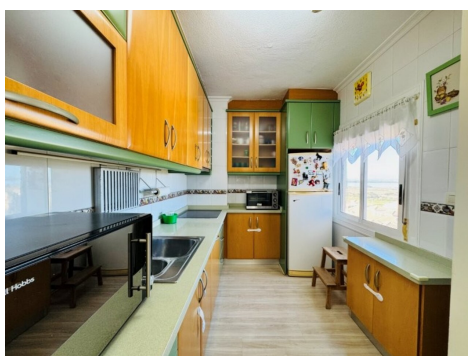
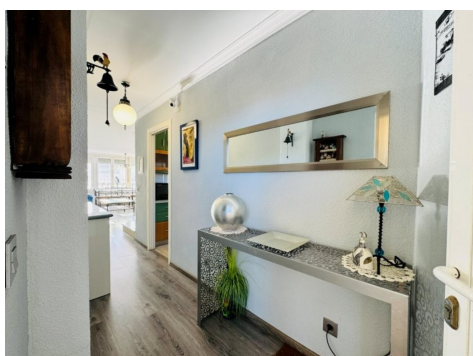
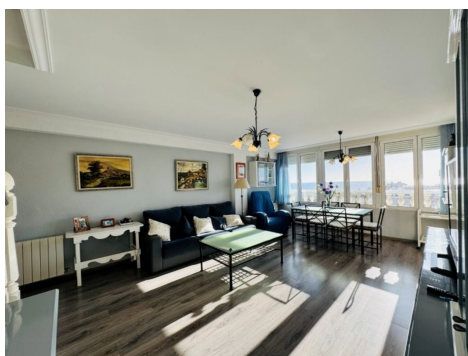


-  **Apartment**
-  **La Mata**
-  **3**
-  **2**
-  **135m² Build Size**
-  **Pool: Yes**
-  **Air conditioning: Yes**
-  **Terrace: Yes**
-  **Terrace**
-  **Parking: Yes**
-  **Beach: 5 Minutes**
-  **Shops: 5 Minutes**
-  **Airport: 45 Minutes**

Ref: CBS3-LM-SPPS1250 Privileged Location with Front Line Sea Views - South East facing Penthouse on the Very Edge of the Large Protected Natural Green Park with Lovely Sandy Beaches - 2 Terraces - 3 Bedrooms - 2 Bathrooms - Large Living Area - Separate Fully Fitted Kitchen - Two Covered Parking Spaces - Elevator - Fully Furnished & Equipped - Air-Conditioning & Central Heating - Large Communal Swimming Pool & Gardens - €470,000 Euros



Penthouse 135m3



Ref: CBS3-LM-SPPS1250 Privileged Location with Front Line Sea Views - South East facing Penthouse on the Very Edge of the Large Protected Natural Green Park with Lovely Sandy Beaches - 2 Terraces - 3 Bedrooms - 2 Bathrooms - Large Living Area - Separate Fully Fitted Kitchen - Two Covered Parking Spaces - Elevator - Fully Furnished & Equipped - Air-Conditioning & Central Heating - Large Communal Swimming Pool & Gardens - €470,000 Euros

Penthouse 135m3

Two Terraces - 30m2

Community Fees - 960 euros p.a.

IBI Tax - 300 euros p.a.