















Ref: MC1-PIN-NBVSMEMED3B

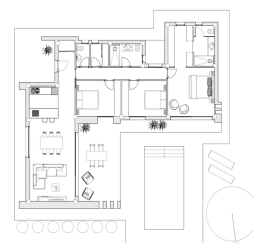
Price: 420,000€



-  **Villa**
-  **Pinoso**
-  **4**
-  **2**
-  **224m² Build Size**
-  **10,959m² Plot Size**
-  **Pool: Yes**
-  **Air conditioning: Yes**
-  **Terrace: Yes**
-  **Terrace**
-  **Parking: Yes**
-  **Beach: 65 Minutes**
-  **Shops: 15 Minutes**
-  **Airport: 45 Minutes**

Ref: MC1-PIN-NBVSMETMED3b New Single Floor Detached Villa on Private 10,000m2+ plot close to the Popular Market Town of Pinoso, Alicante - 4 Bedrooms - 2 Bathrooms - from €420,000 Euros - - Plus a Plot of your choice (Pinoso from 60,000 euros - Aspe from 75,000 euros - Choice of with or without Vines/Trees)

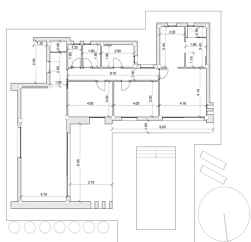
- * Spacious Luxury Villa (224m2)
- * Large Private Plot (10,000m2+)
- * Large Terrace (126m2)



Superfícies Úteis	
Membres	Área
Dormitorio 3	12,80 m ²
Dormitorio 2	12,80 m ²
Dormitorio 1	17,33 m ²
Vestíbulo	7,58 m ²
Baño 1	6,26 m ²
Baño 2	5,51 m ²
Cocina	5,04 m ²
Área	3,35 m ²
Pasillo	7,00 m ²
Armario	1,32 m ²
Escalador	4,27 m ²
Celina	10,67 m ²
Sala + Comedor	29,30 m ²
Terreno cubierta	19,33 m ²
Área cubierta	19,33 m ²
TOTAL SUP. ÚTIL	144,24 m²

Superficie Construida	
Membres	Área
Vestíbulo	194,53 m ²
Área Cubierta	4,43 m ²
Pasapelo	37,94 m ²
TOTAL SUP. CONSTRUIDA	236,90 m²

Superfície Construída	
Membre	Área
Vivienda	148,53 m ²
Área Cobierta	4,62 m ²
Paseo	27,94 m ²
TOTAL SUP. CONSTRUIDA	179,09 m²



Superfície Útil	
Número	Área
Desemboia 3	12.90 m ²
Desemboia 2	12.90 m ²
Desemboia 1	17.12 m ²
Vestíbul	7.55 m ²
Bela 1	6.98 m ²
Bela 2	5.57 m ²
Bela 3	3.94 m ²
Isso	2.28 m ²
Passilô	8.18 m ²
Armário	1.32 m ²
Recepção	8.37 m ²
Cadex	19.87 m ²
Sala - Comedor	28.16 m ²
Sala - cozinha	28.82 m ²
Sala - escritório	6.78 m ²
TOTAL SUP. ÚTIL	144.24 m ²

Nombre	Área
Vivienda	146.53 m ²
Área Cubierta	4.62 m ²
Paseo	27.94 m ²
TOTAL SUP. CONSTRUIDA	179.08 m²



Superfícies Úteis	
Modelos	Área
Demarcador 3	12,00 m ²
Demarcador 2	12,00 m ²
Demarcador 1	17,13 m ²
Verticalizador	3,55 m ²
Relevo 1	4,38 m ²
Bailete 2	5,51 m ²
Colante	5,04 m ²
Árvores	2,38 m ²
Passilite	8,10 m ²
Armadilha	1,32 m ²
Rebocador	4,37 m ²
Relevo 2	3,55 m ²
Carro - Caminhão	29,18 m ²
Troca de colante	59,63 m ²
Árvores colante	4,35 m ²
TOTAL SUP. ÚTIL	144,24 m²

Superfície Construída	
Modelos	Área
Vitrando	148,53 m ²
Acesso Colante	4,82 m ²
Portão	29,64 m ²
TOTAL SUP. CONSTR.	182,99 m²

Superficie Construida	
Nombre	Area
Vivienda	146.53 m ²
Aceras Callesita	4.82 m ²
Pergola	27.94 m ²
TOTAL SUP. CONSTRUIDA	179.29 m²



Superfície Útil	
Numero	Area
Decorativo 2	12.00
Decorativo 2	12.00
Decorativo 1	17.13
Ventilador	7.55
Baño 1	6.28
Baño 2	5.51
Cocina	3.04
Acaso	2.00
Paredes	8.13
Armario	1.22
Refrigerador	4.27
Cuadro	10.67
Sofa - Comedor	29.18
Taraxa cubierta	29.63
Acaso cubierto	4.35
TOTAL SUP. ÚTIL	144.28

Superfície Construída	
Numero	Area
Ventilador	146.55
Acaso Cubierta	4.62
Paredes	27.94

Superficie Construída	
Modelos	Área
Vivienda	146,53
Área Cobierta	4,82
Reserva	33,66

Ref: MC1-PIN-NBVSMTMED3b New Single Floor Detached Villa on Private 10,000m2+ plot close to the Popular Market Town of Pinoso, Alicante - 4 Bedrooms - 2 Bathrooms - from €420,000 Euros - - Plus a Plot of your choice (Pinoso from 60,000 euros - Aspe from 75,000 euros - Choice of with or without Vines/Trees)

* Spacious Luxury Villa (224m2)

* Large Private Plot (10,000m2+)

* Large Terrace (126m2)

* 8m x 4m Swimming Pool

* 4 Double Bedrooms

* 2 Full Bathrooms

* Laundry

* Store Room / BBQ

* Other different designs also on large plots available (see the Images & Plans)

* Alicante airport 45 minutes